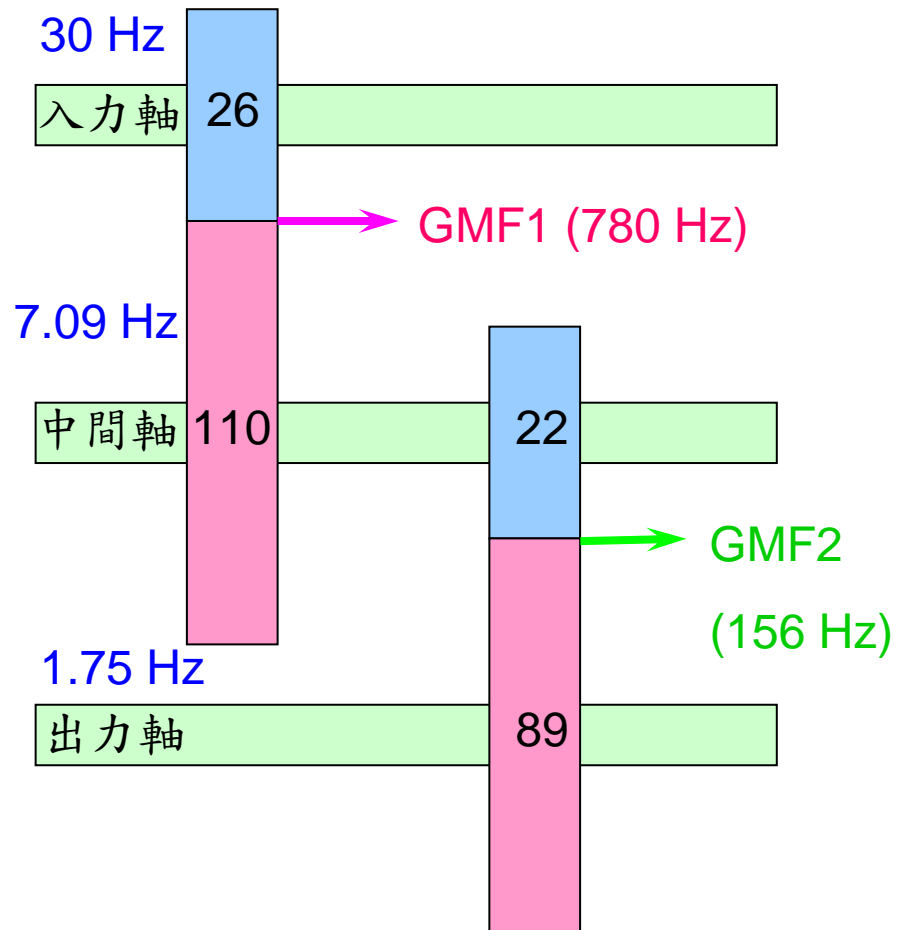


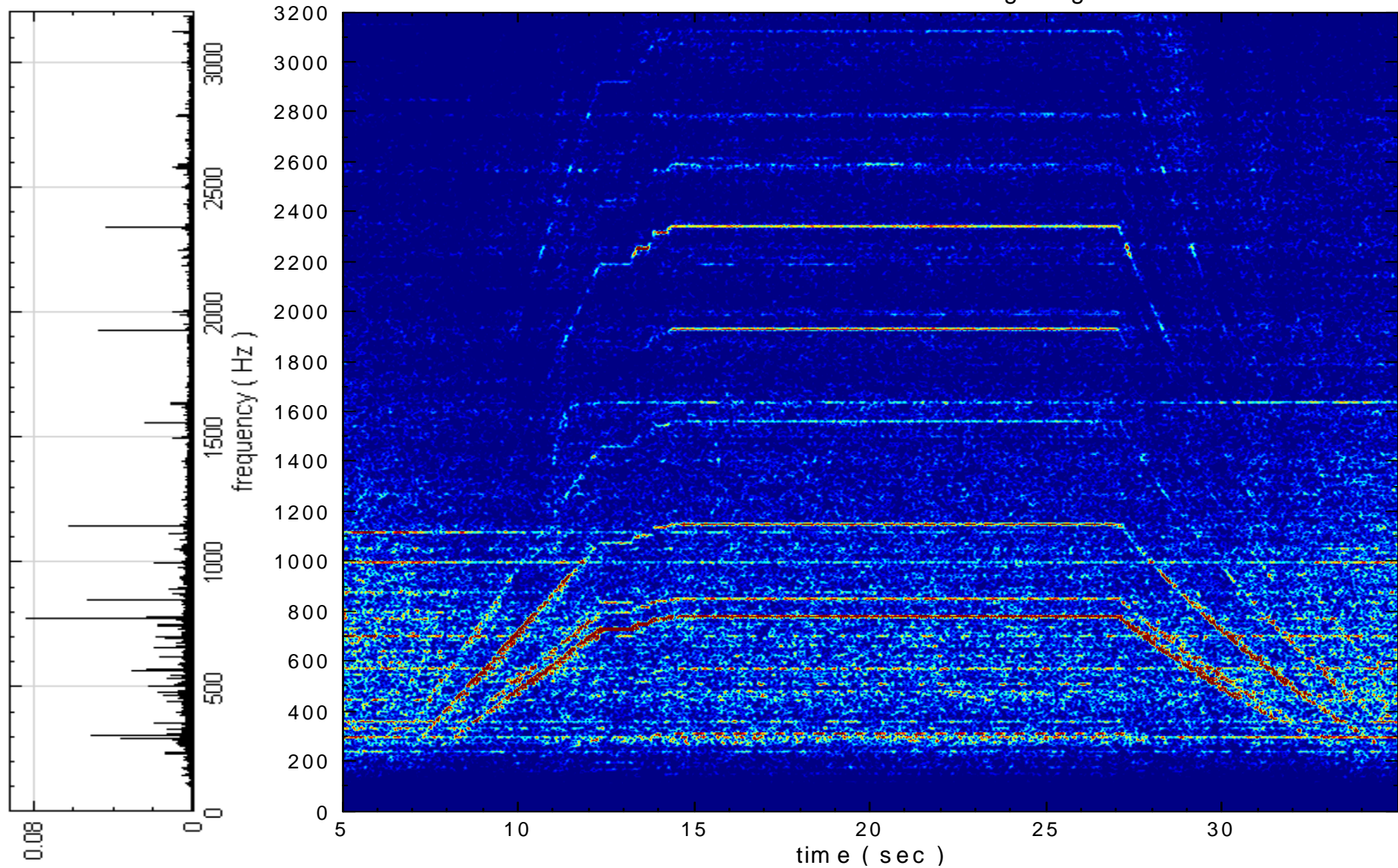
電源頻率60Hz-轉軸頻率及啮合頻率

轉軸頻率



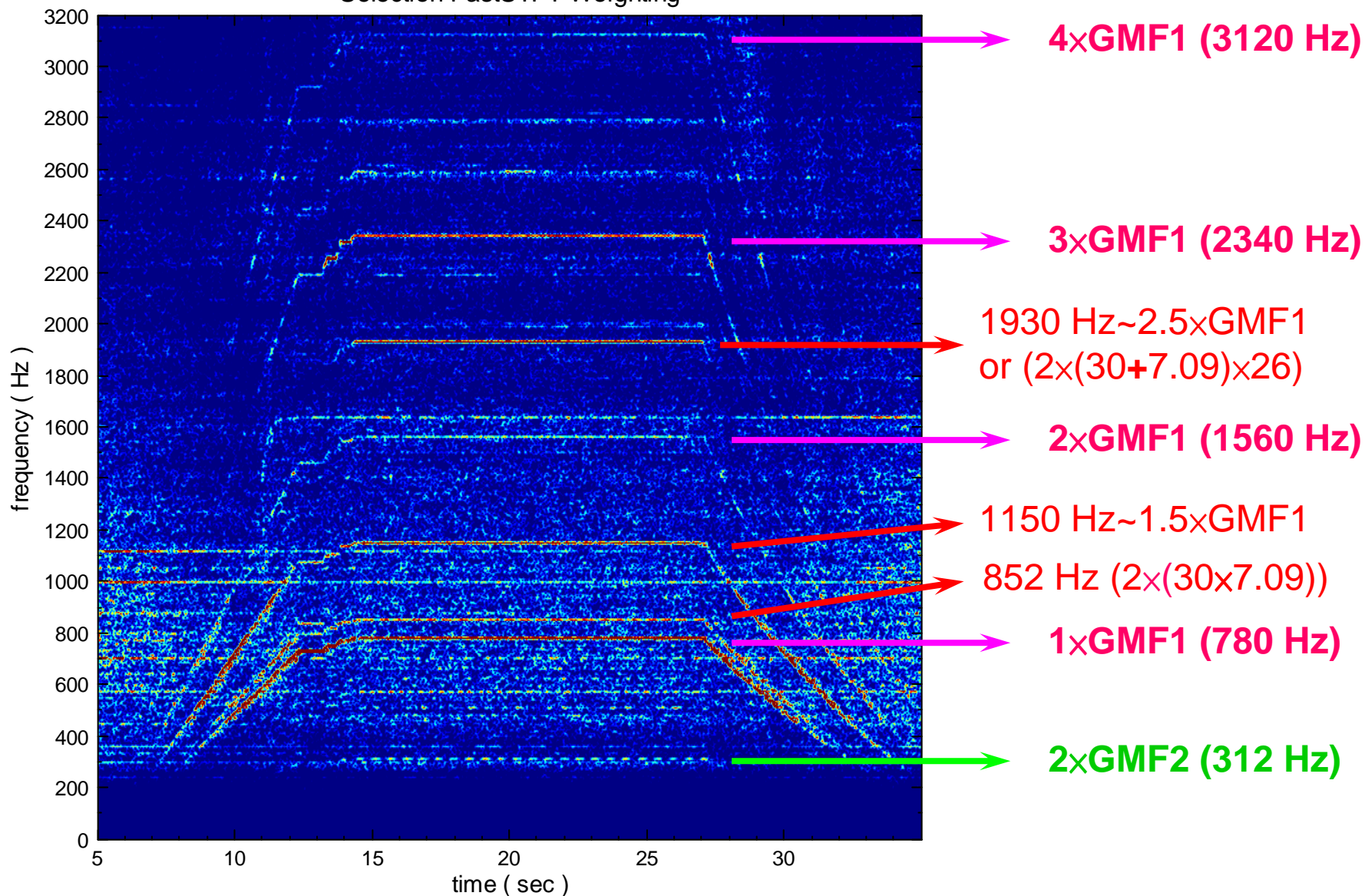
60Hz-正常生產運轉方向 聲音原始頻譜

Selection-FastSTFT-Weighting



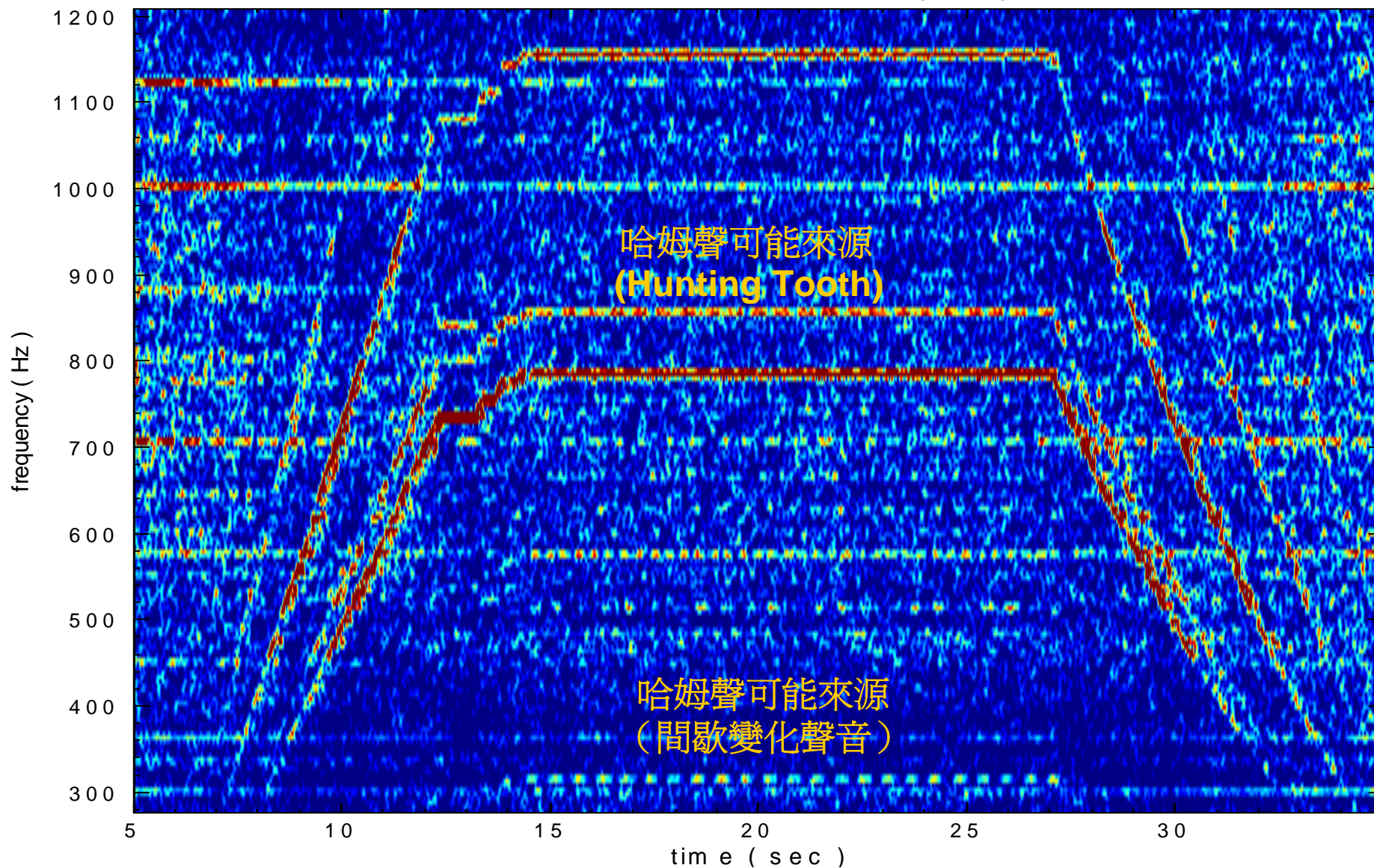
60Hz-正常生產運轉方向 聲音A加權頻譜→人耳感受

Selection-FastSTFT-Weighting

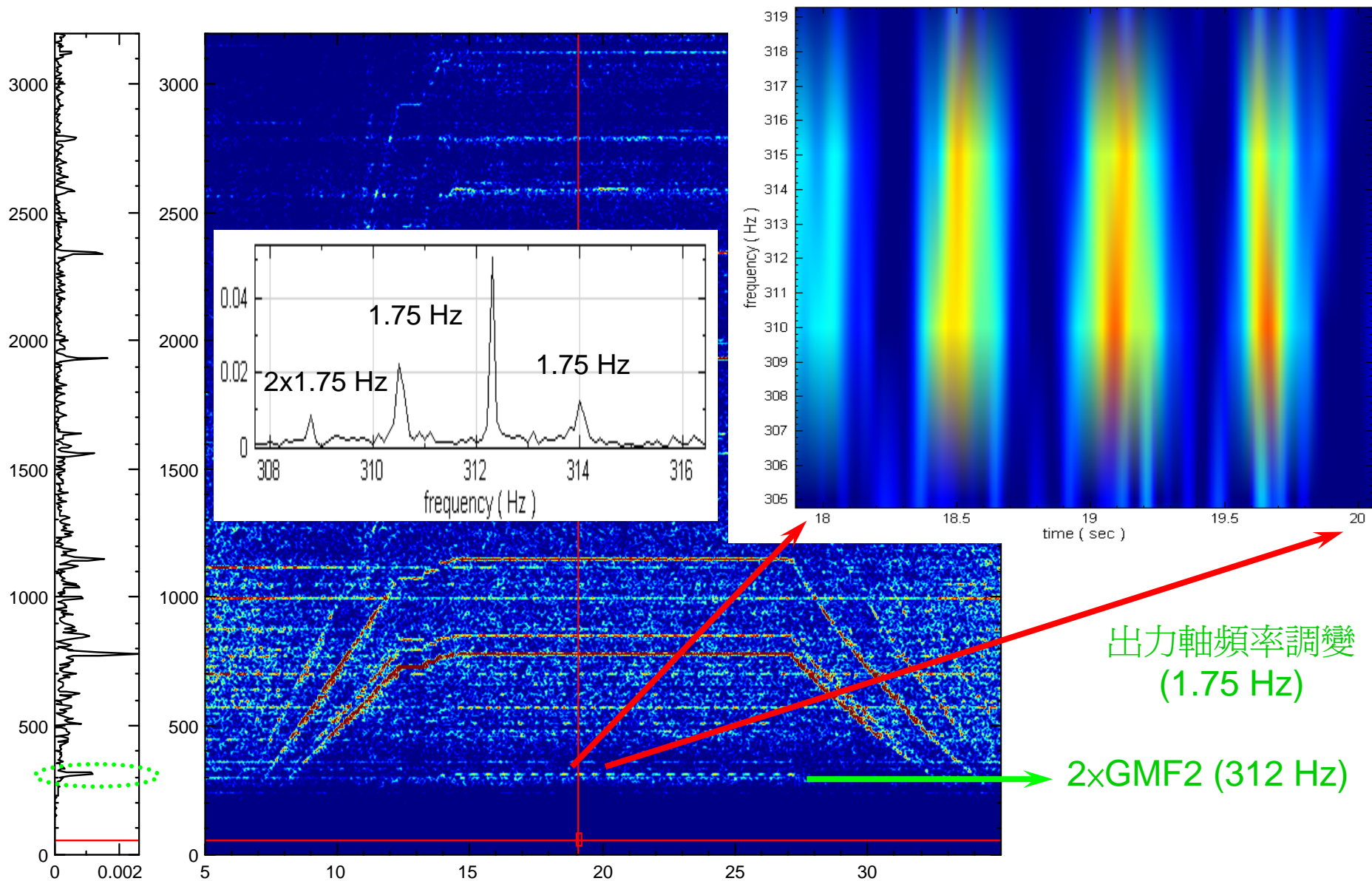


60Hz-正常生產運轉方向 聲音A加權頻譜 → 低頻區域

Selection-FastSTFT-Weighting



60Hz-正常生產運轉方向 中間軸與出力軸之嚙合頻率



出力軸頻率調變
(1.75 Hz)

2xGMF2 (312 Hz)

60Hz-正常生產運轉方向

其他問題頻率1：Sum modulation 2倍頻

